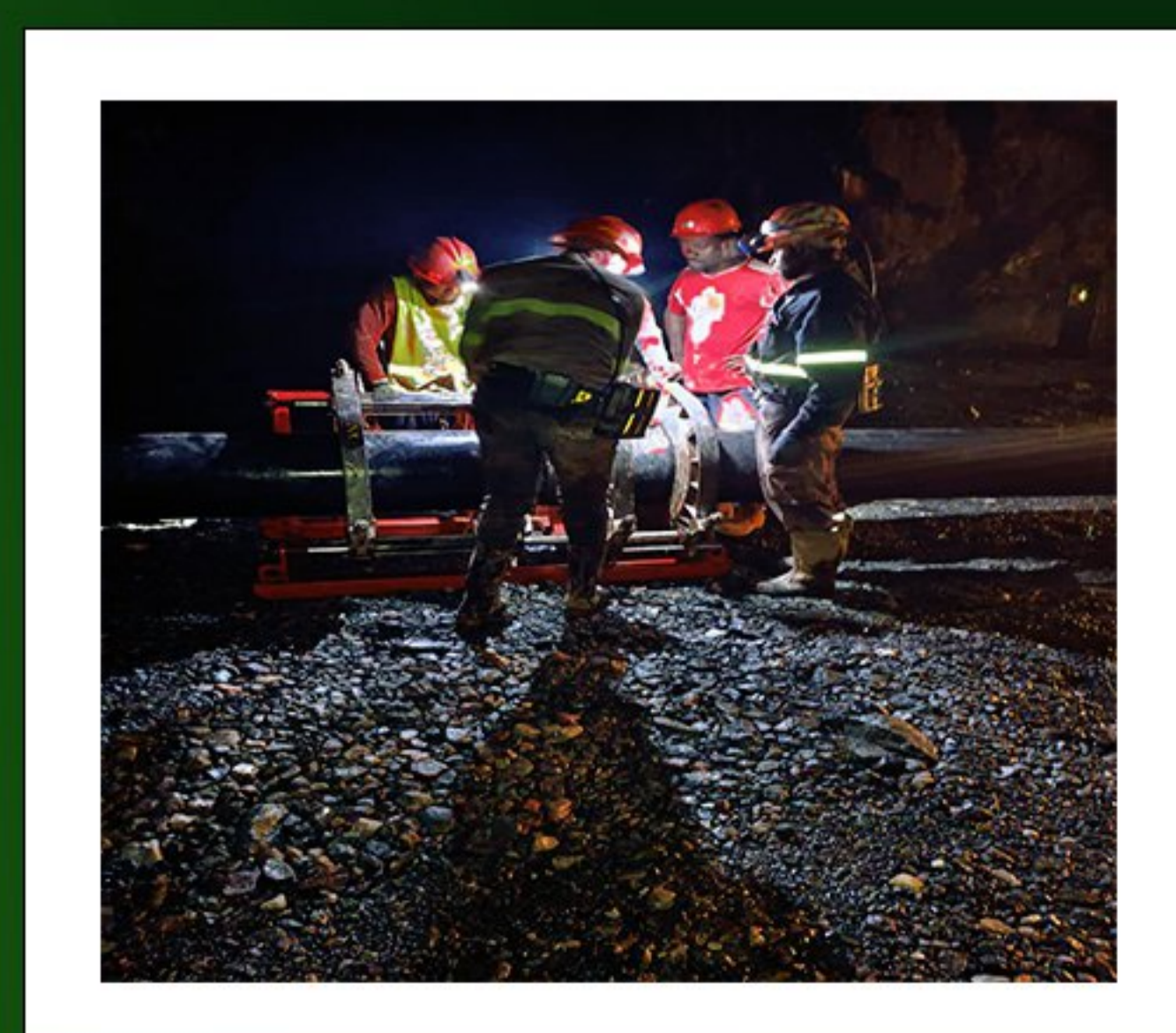
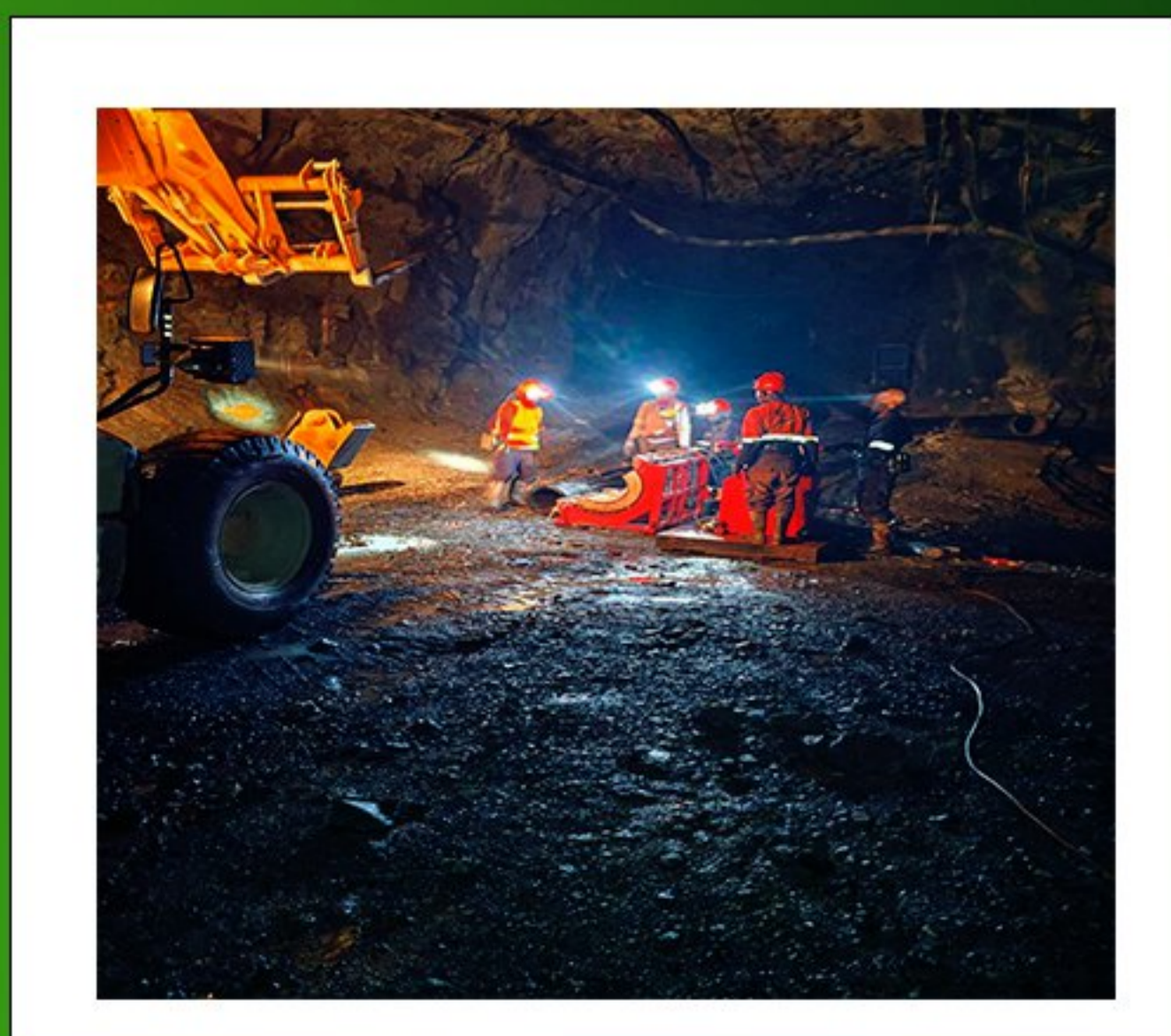
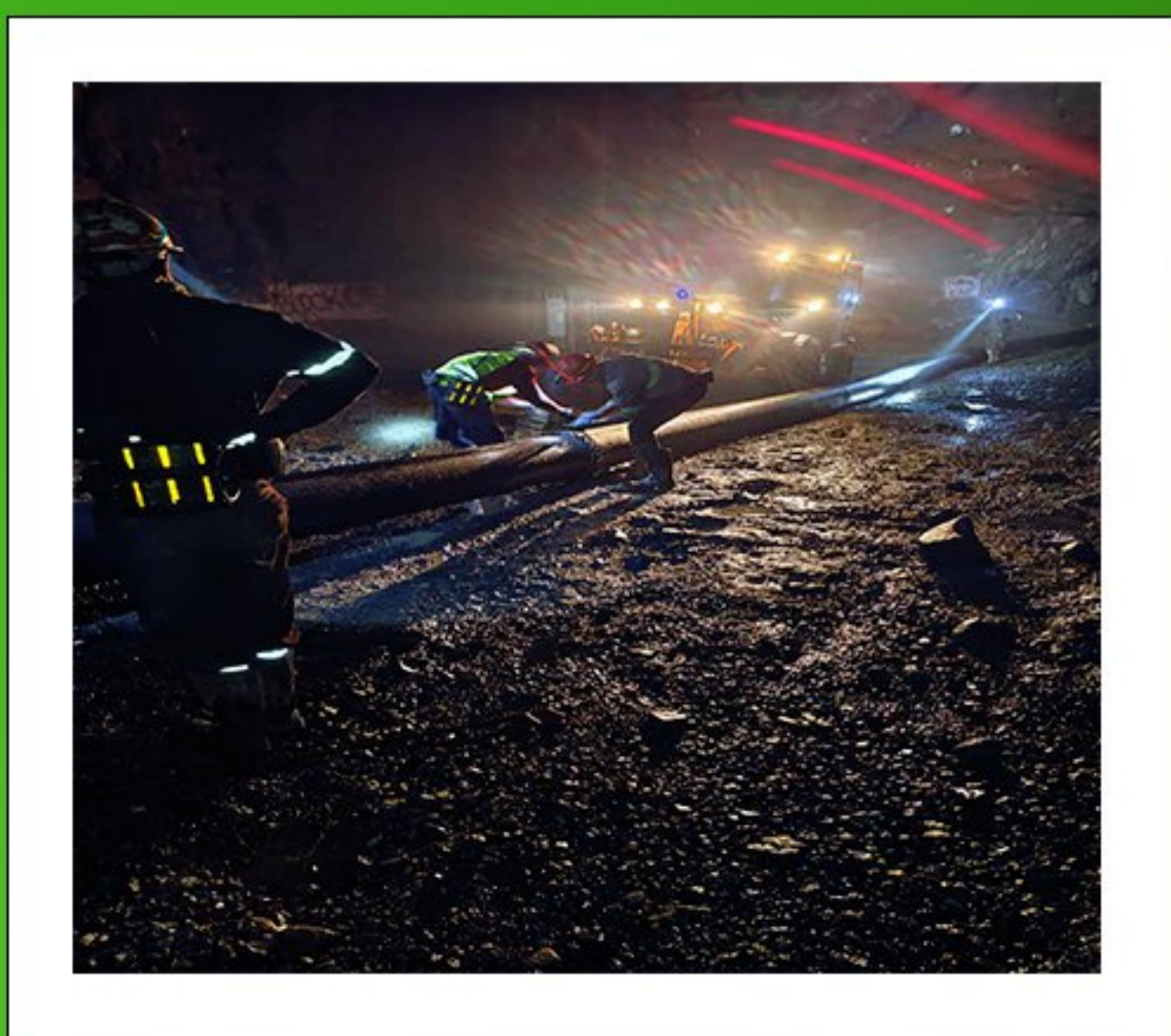




# COMPANY PROFILE

## HDPE pipes

Supply , welding and installation





**THE WORKFORCE  
YOU DESERVE**



The  
workforce  
you deserve

**GLORHIS MULTISERVICES** is an Industrial Business Organisation registered in the Democratic Republic of Congo in the 2019. The Business is wholly Led by Congolese, Zambians and South Africans. The company is located on Plot No. 338 Kamba Avenue, Kolwezi, Lubila, Congo.

We are dealing in various type of Steel construction, fabrication, repair works, chain supply, relining, splicing and motor rewinding, Bucket and trays repair, line boring...



# Our Values

Underlying our mission are philosophies and values of professionalism, quality, business ethic, social responsibilities, financial stability and fairness in dealing with customers and staff. In the implementation of our corporate strategy we restate our commitment to the following principals

- We value our customers CORPORATE GOVERNANCE
- We approach every aspect of our work with the highest standards of integrity.
- We approach our work seriously as a professional team.

GLORHIS MULTISERVICES is supported by over ten years experienced workers in the heavy construction and fabrication industry, with numerous contacts and suppliers that will surely meet your needs and prices.

## **CORPORATE GOVERNANCE**

The company functions consistently through a streamlined structure with day to day hands on management. Our policy of transparency and discipline within a highly driven process ensures good cooperate governance.



# Our Vision

**GLORHIS MULTISERVICES** vision is to become the leading supplier and contractor by providing quality innovative products and solutions which are supported by quality and timely delivery system and excellent personal service.

In realizing this vision **GLORHIS MULTISERVICES** will take all necessary steps to be the best by having access to the full range of technical, business, technological and specialist skills within and outside our business partners network so that we achieve sustained growth in value and meet expectations of all stakeholders, thus becoming number one in every aspect of sales, profits, market leadership and people.

# ORIENTED TOWARDS GROWTH

AT GLORHIS MULTISERVICES Systems we believe that people are our greatest asset.

Therefore, our technical team comprises of competent professionals who are able to deliver the best at all times. This strength is complemented by our strategy to keep abreast or economic variables in the market while focusing on the bottom line. We have deliberately built a business based on long term relationships in order to be ahead of our competitors as we in-

## MANAGEMENT POLICY

GLORHIS MULTISERVICES has a management which is driven by dedication and a desire for growth and development. Our desire is to add value and develop the entity into a dynamic firm through building relationships.

Motivating and being in touch with activities of the company. This involves creation of time to adequately negotiate and document process as well as build management skills, creativity and initiative. At GLORHIS, we nature an environment that promotes respect, trust and productivity, thus establishing a culture of added value.



# DEVELOPMENT STRATEGY

We understand the value chain and the role of each participant. Therefore we aspire to reorient our business development strategy towards diversity, strength and growth in the short and long run.

Our customer service policy will be unmatched as we take into account local competitiveness, quality assurance and just-in-time delivery among other things.

With streamlined operations, new product development, improved performance and strengthened shareholder value in our organisation, we strive to appeal to the impulse-oriented target market.

This development will propel us to further identify and exploit the positive business climate for future diversity growth.

Therefore, we intend to vigorously pursue a policy of ongoing quality improvement and, market share. This constitutes the core objective of our business development.

Below are the works that we do for various Mining companies Below: Welding old Hanger bar to New Blank plate.

Hanger bars with stainless steel outside and copper bar inside turn to have a longer life span than the Blank Plate hence we only reclaim Hanger Bar from a worn out plate and weld it to new Blank

Plate. Hanger Bars with Copper outside and Stainless Steel tube inside turn to wear out faster than the Blank Plate hence we replace New Hanger Bar to old Blank plate.



# COMPANY STRUCTURE



## **PRODUCT AND SERVICES**

We offer our customer best solutions in term of quality, value, delivery, follow-up and support from initial ordering, delivery and support. GLORHIS will work with customer to create innovative solutions and achieve success together. When we provide products for critical applications and operations, there is no doubt. Maximum durability isn't just desired, it is required.



## **Product and Service Range**

1. DOMESTIC AND INDUSTRIAL PIPING
2. CODED WELDING WORKS
3. GENERAL FABRICATION WORKS
4. GEARS
5. SHAFTS & PINS
6. ROLLERS
7. REHABILITATION WORKS
8. BLANK CATHODES REPAIR WORKS
9. RELINING
10. SPLICING
11. MOTOR REWINDING
12. CHAIN SUPPLY

## **TECHNOLOGY**

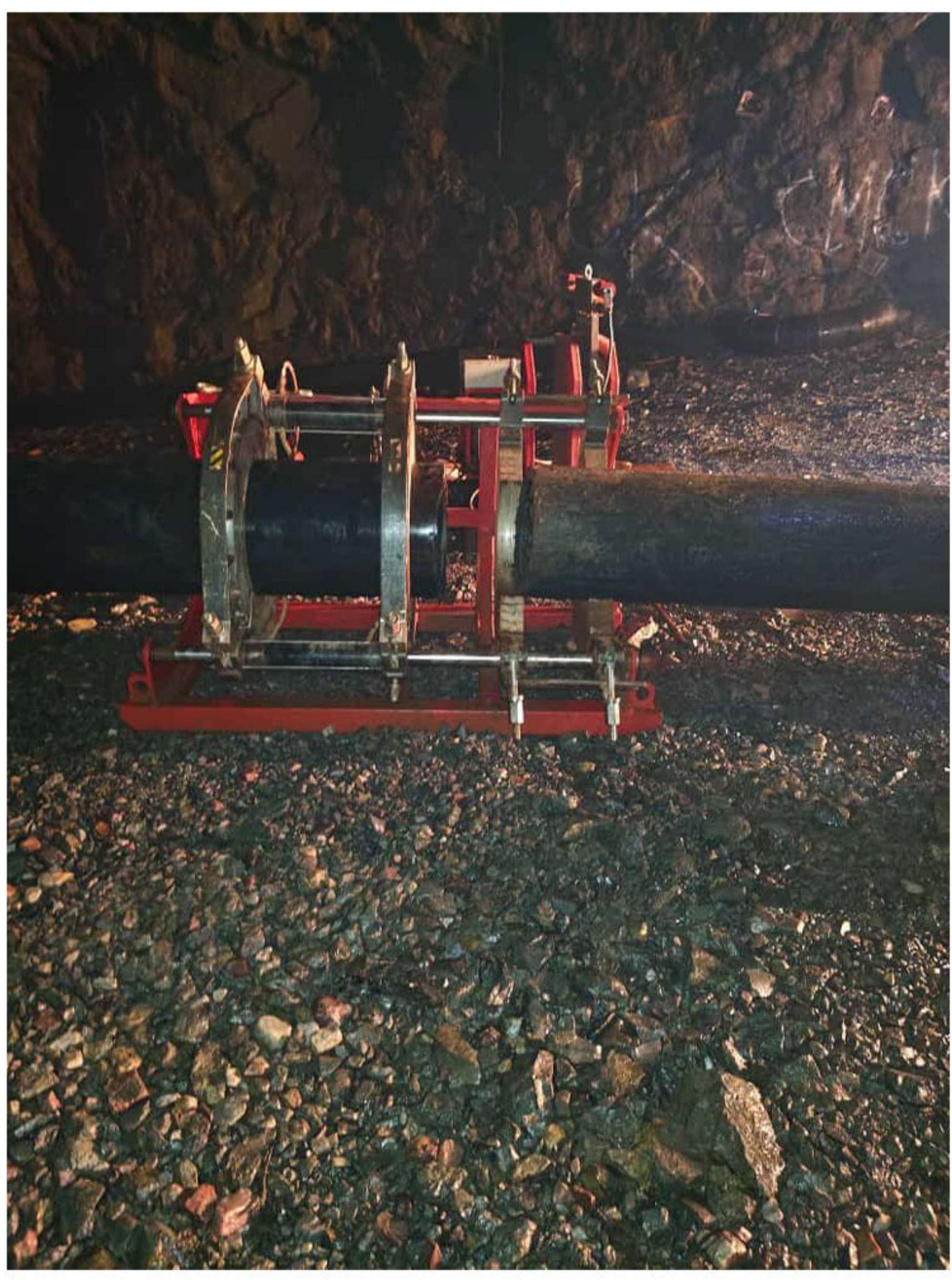
Our products are grounded in technology and innovation is motivated. We will continually strive to be leaders in this industry. Our dedication to technology and innovation is motivated by the desire to provide products that contribute to the growth of our customer.



## **AMOVAIBLE EQUIPMENT**

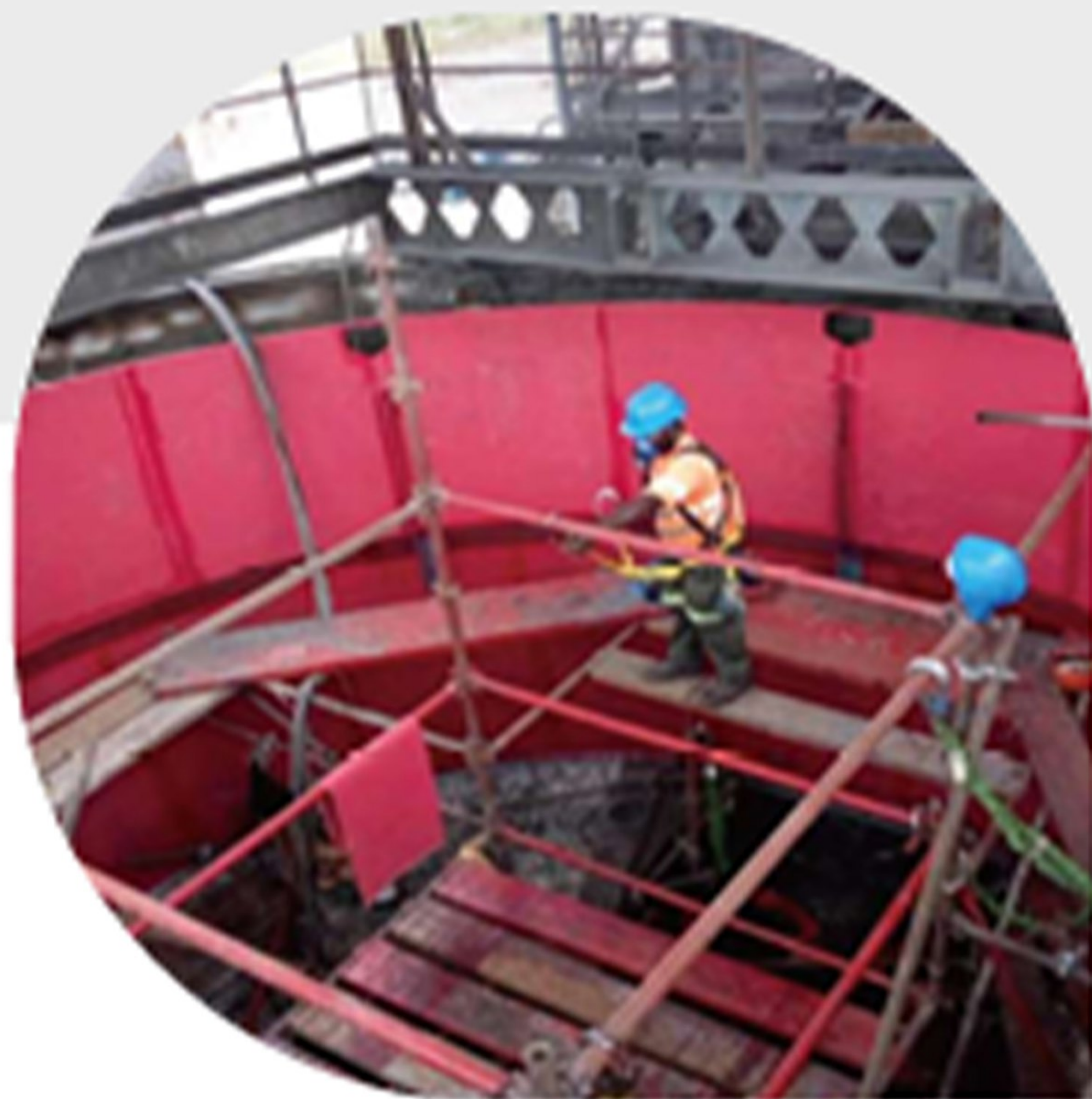
- 1. SCAFFOLDING**
- 2. WELDING MACHINES (X8 )**
- 3. GRINDING MACHINES (X8 )**
- 4. OXYGEN, ACETYLENE CUTING SETS (X6)**
- 5. HAND DRILLING MACHINES (X7)**
- 6. MAGNITIC DRILLING MACHINE (X8)**
- 7. MIG WELDERS (03 )**

# HDPE pipes welding and installation



Belt splicing,  
Rubberlining,  
Pulleylagging,  
Installation of conveyor belt

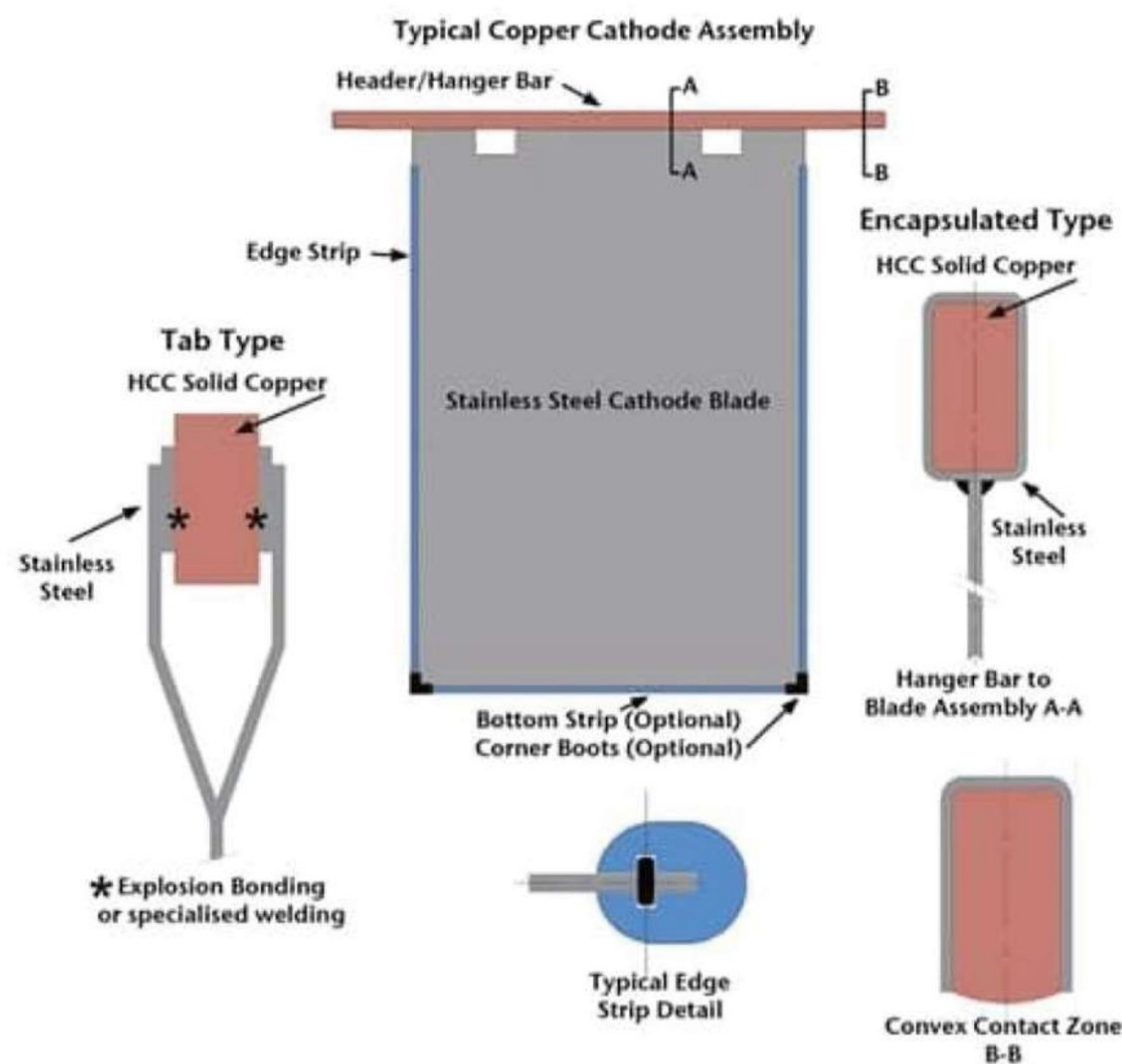




The workforce  
you deserve

FIG 2

# Shows the Typical Copper Cathode Assembly



We do Mechanical and Domestic cleaning on used Copper Cathode Plates to add life span.  
We do Thickness test on Used Copper cathodes to determine the life span of the Blank plate.  
We do straighten the bent plate back to the required standard.  
Edge Strips to discuss with client according the type used.

## SERVICE

We always remember that we are a service organisation, each and every customer is valued as part of whom we are today and who we will be tomorrow. We will work to own our customer, trust and loyalty and more than simply responding to customer needs, we work to anticipate them with unquestionable honesty, fairness and respect.

Below: Welding old Hanger bar to New Blank plate. Hanger bars with stainless steel outside and copper bar inside turn to have a longer life span than the Blank Plate hence we only reclaim Hanger Bar from a worn out plate and weld it to new Blank

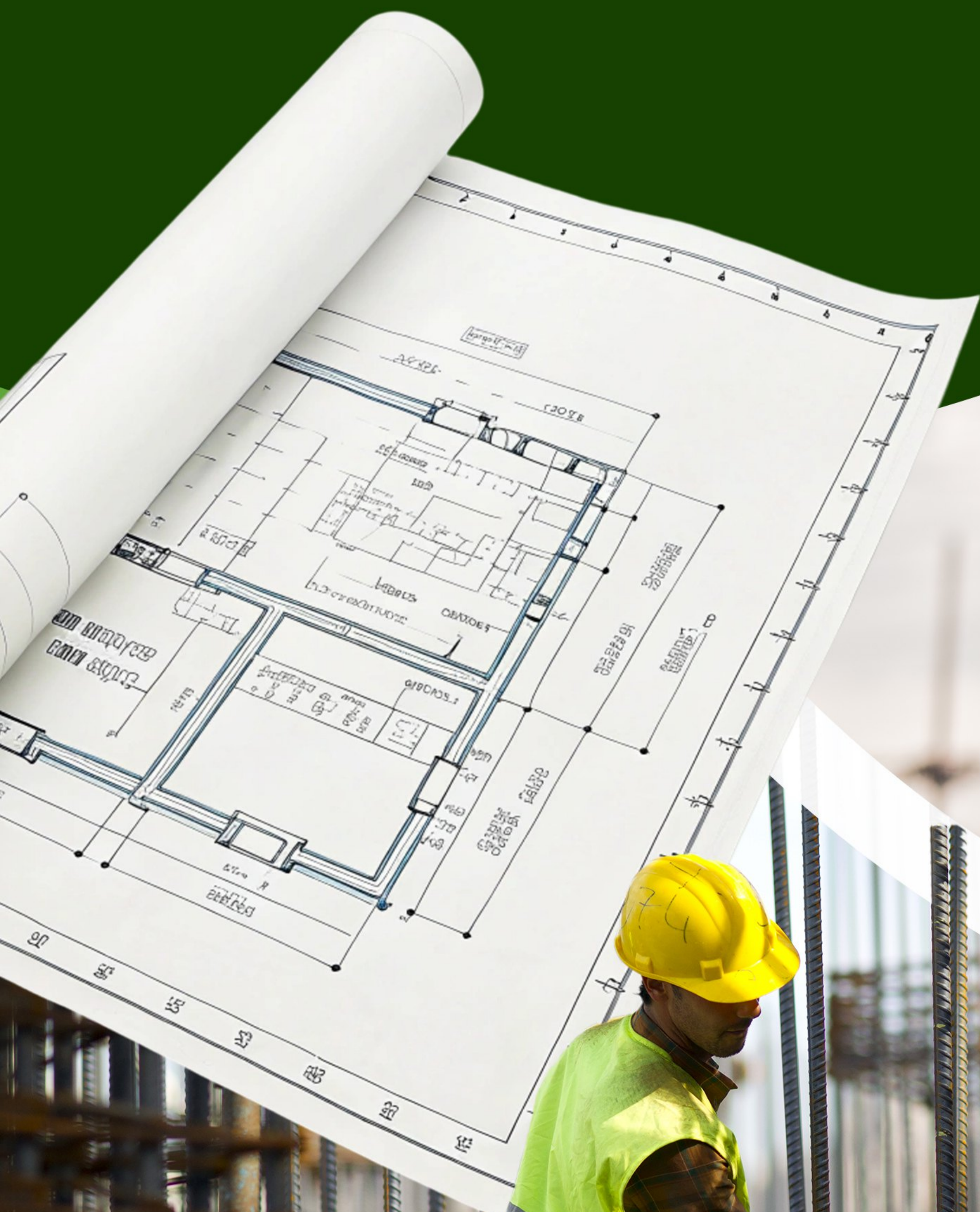
Plate. Hanger Bars with Copper outside and Stainless Steel tube inside turn to wear out faster than the Blank Plate hence we replace New Hanger Bar to old Blank plate.



FIG 1:  
Blank cathodes  
repairing

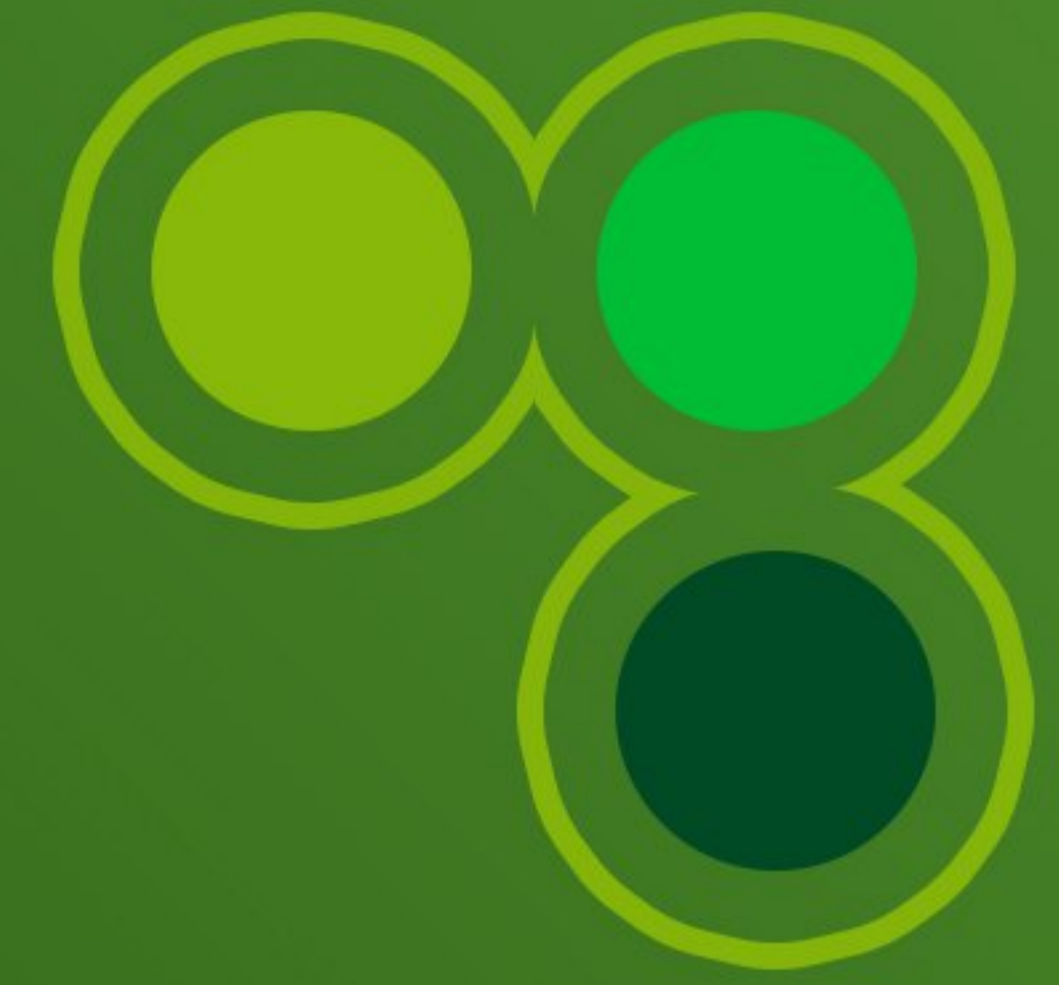


# Civil Engineering





# Cooling Service



Here we want to express our heartfelt gratitude to our clients for the trust they have been placing in us. Since we came into business in 2009, we have proven our expertise and experience in a number of industries and provided consultation on a

## **ELECTRICAL**

Electrical installations  
Various types of motors  
Installation and repair of faulty electrical equipment and supply of spares.

## **MECHANICAL and CHEMICAL**

Re-gassing of industrial and commercial or domestic air conditioners and fridges  
Maintenance and repair of heavy equipment machine air conditioners  
Compressor and overhaul replacements  
General fridge repairs  
Air-conditioning cooling, heating and ventilation  
Motor vehicle air-conditioning repair and maintenance  
Installation of cold rooms, ice making machines and chiller



# Piping and Structural



# Pipe and Tank assembly

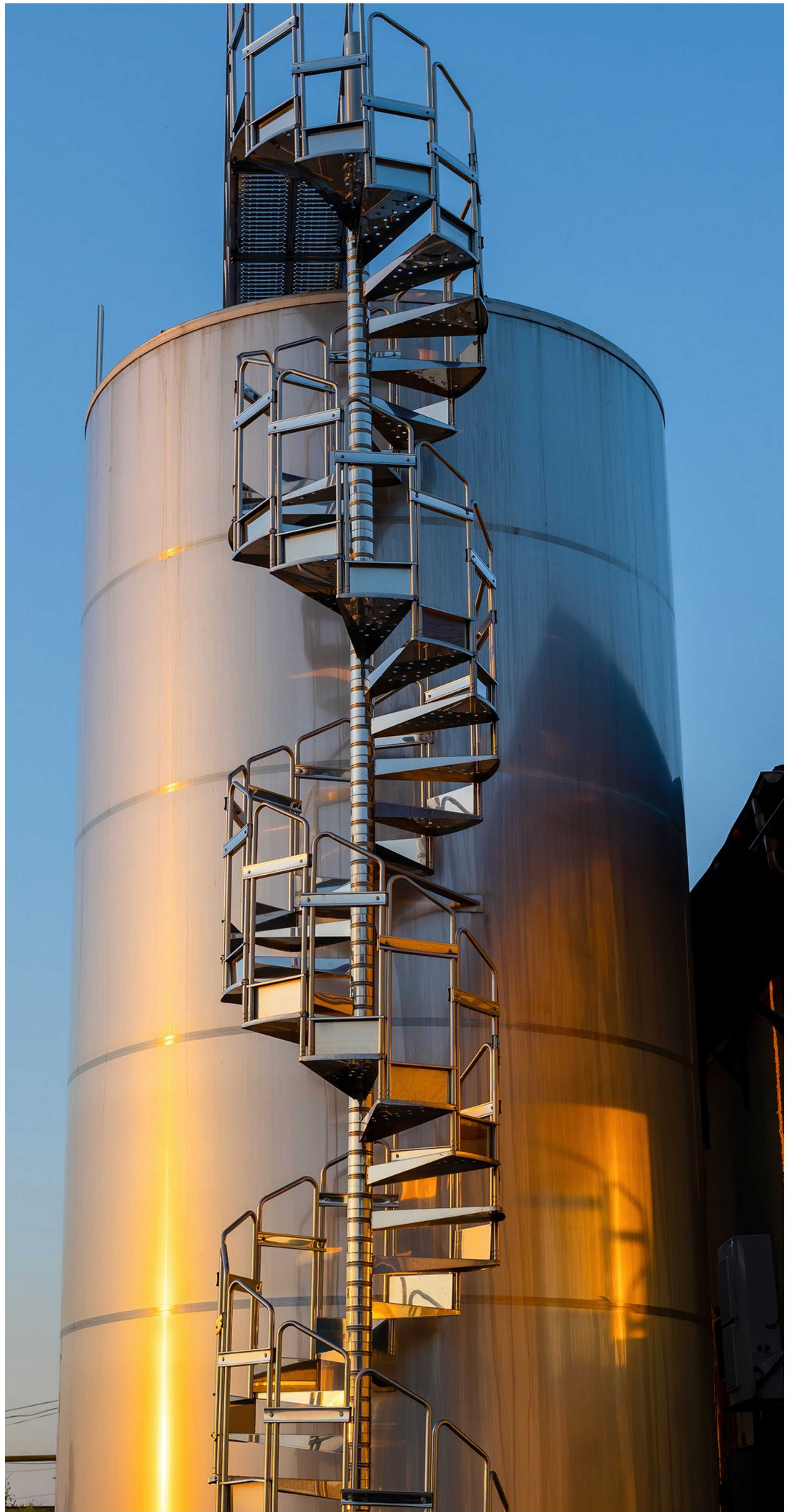
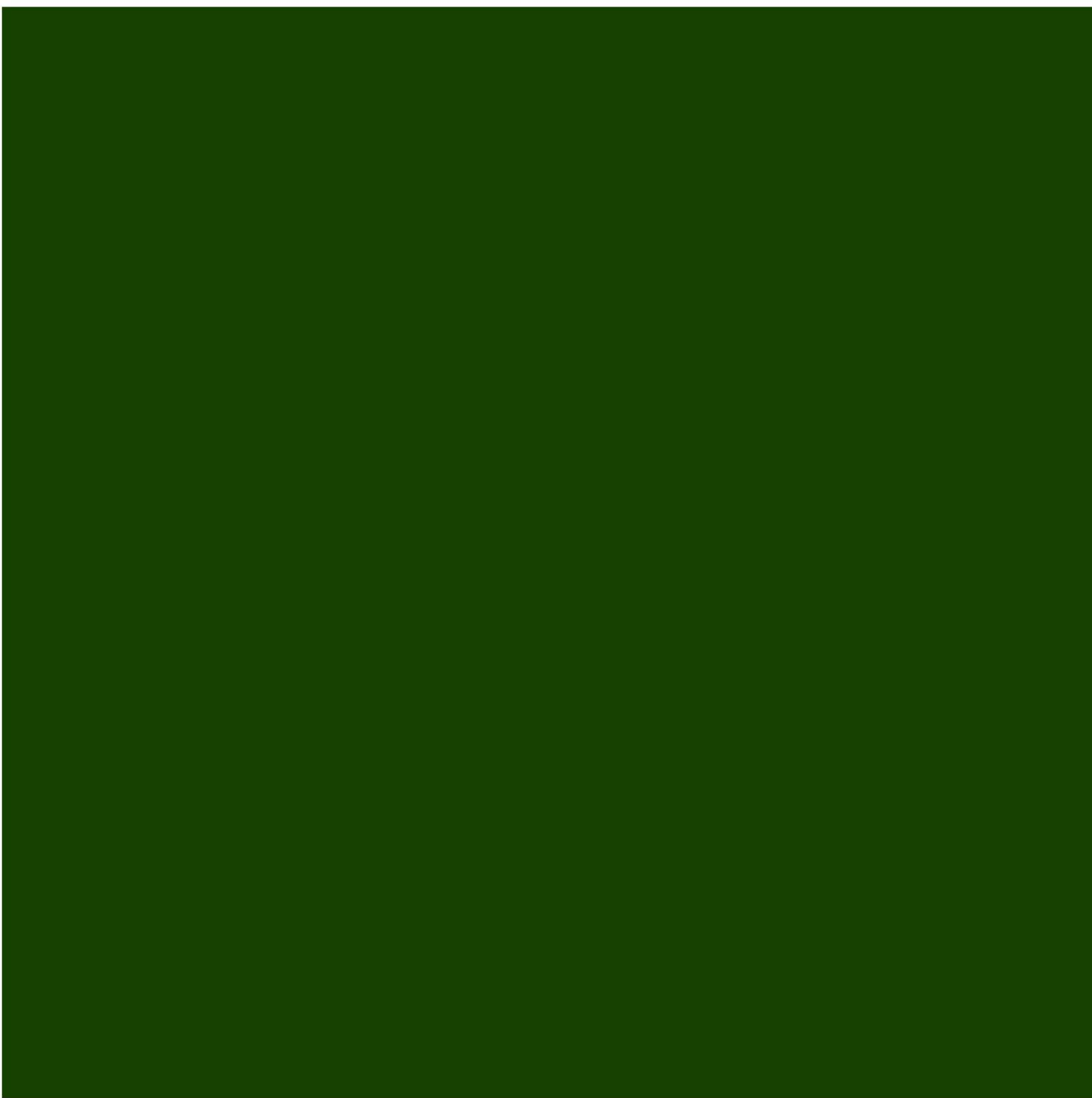
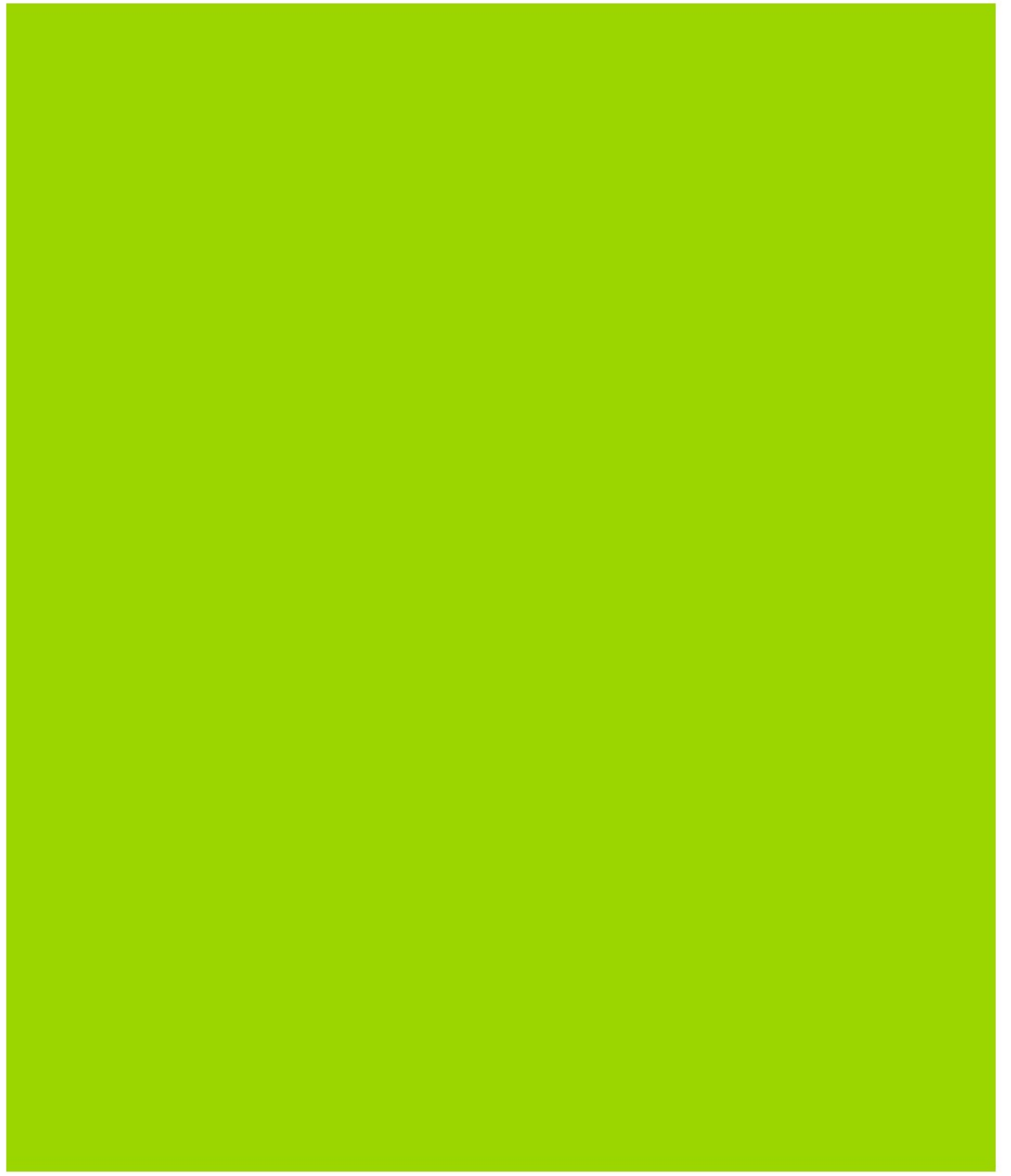




# Screen Vibrator Fabrication



# Pipe Fabrication



## Heat Exchanger RE Tubing



## Acid Storage Tanks Refub

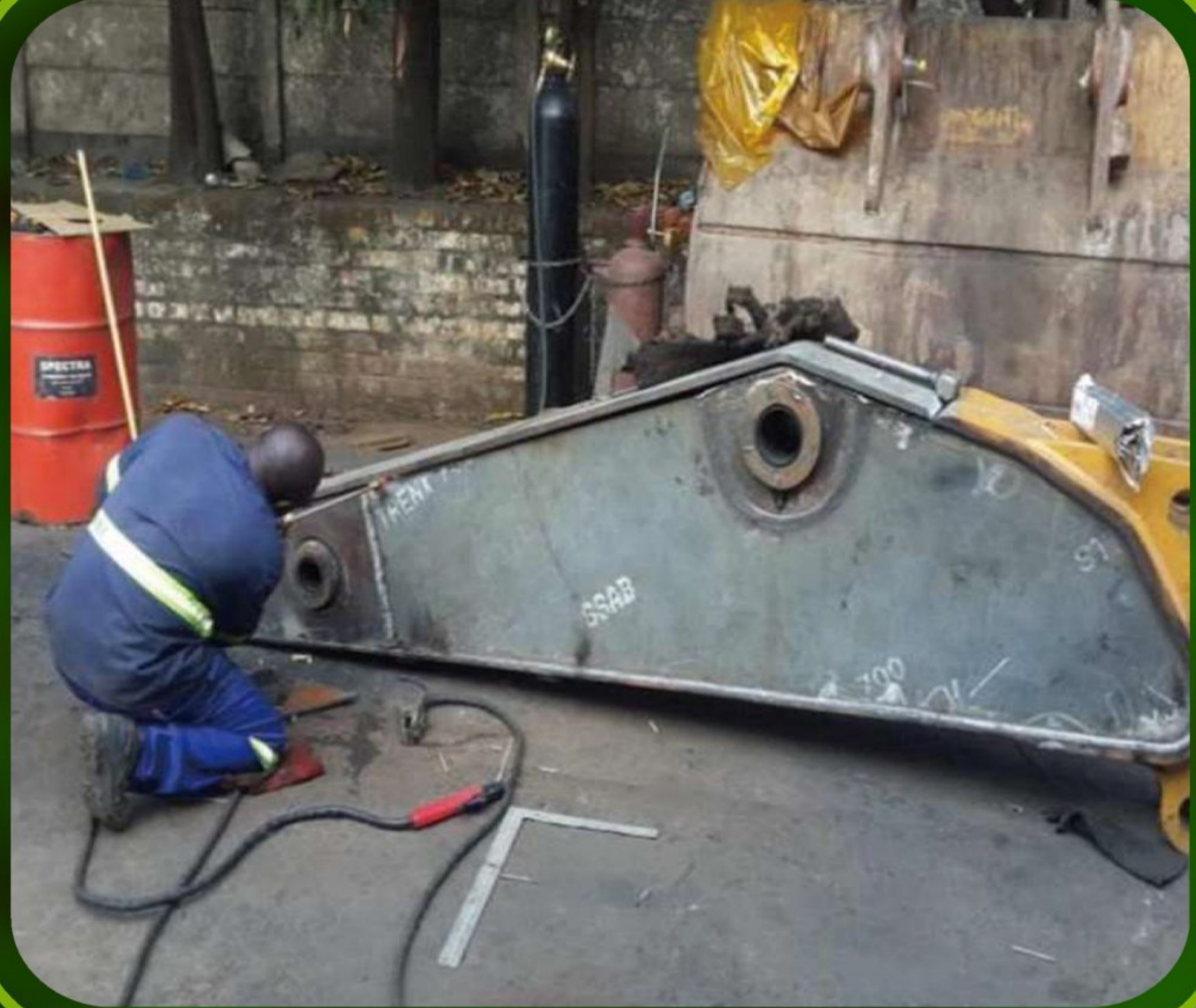




Acid line fabrication and installation



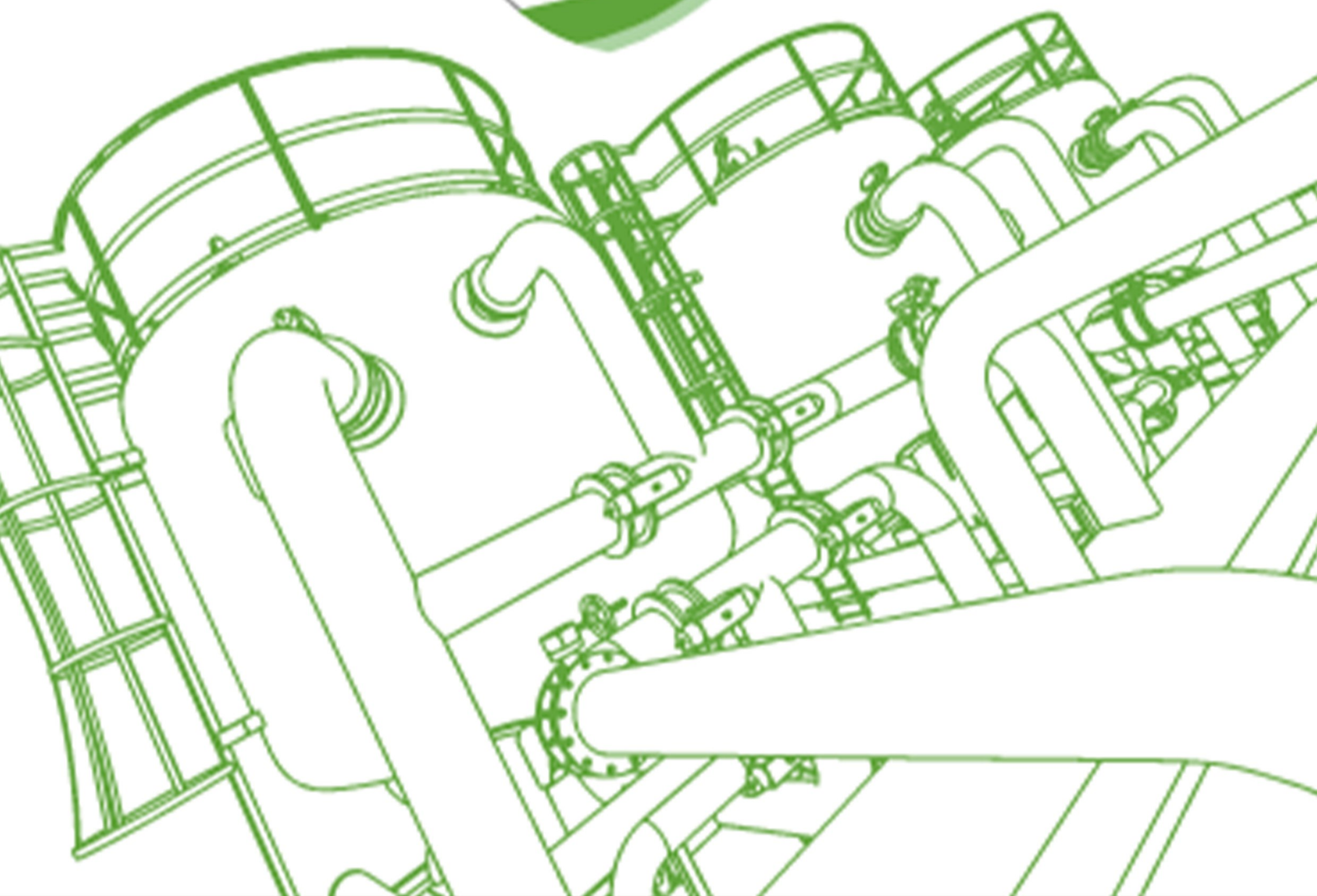
Line boring





# Buckets and trays repair





# REFERENCES

**Warrick Gouws**

**+243 814 514 803**

**Paulin Mulaj**

**+243 817 112 729**

**William Kaponda**

**+243 970 466 372**

**Fabrice komba**

**+243 810 760 998**

**Graham Muddon**

**+243 811 022 674**

**Alexander kurschaski**

**+243 830 543 062**



## LEGAL INFOS

RCCM CD/KNG/RCCM/19B00444

ID. NAT 0183N445523F

NIF A1905450W

## ADRESS / CONTACT



Num 6005 , chemin public Q/ Golf Club ,  
Kolwezi



Tél. : 243 99 79 39 708, 243 97 04 00 050



Email : glorhisgms01@gmail.com